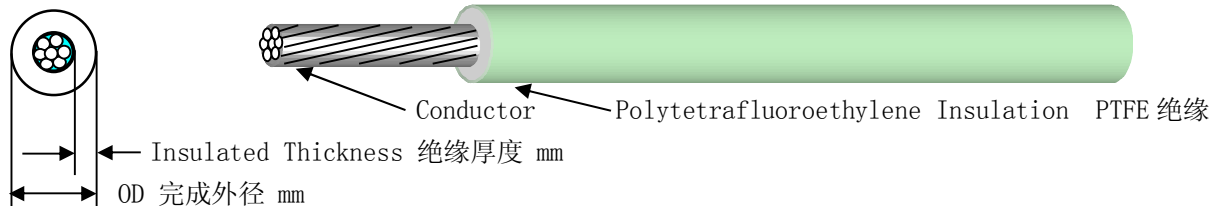




美国军用电线 MIL-W-16878/4C (NAVY)



引用标准:

MIL-W-16878/4C (NAVY) 11 September 1992 And Amendment 1 8 June 1994

替代

MIL-W-16878/4B (NAVY) 10 August 1981

使用材质:

聚四氟乙烯 PTFE (POLYTETRAFLUOROETHYLENE) 材质绝缘, 额定温度: 200°C; 额定电压: 600V。

应用范围:

应用于海军司令部及国防部相关的各个部门。

标准规格参数:

PIN	Wire size (AWG)	Stranding	Conductor		Conductor Diameter (mm)	Insulated Thickness Nominal (mm)	Finished Wire Diameter (mm)	
			Material	Coating			Min	Max



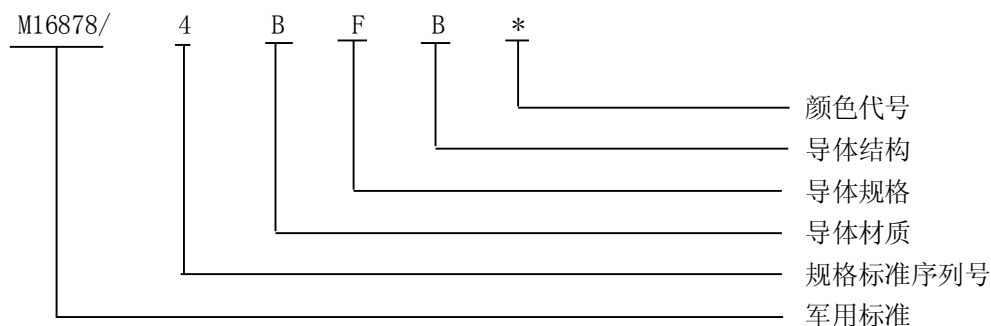
M16878/4BAA*	32	1/0.203	Copper	Silver	0.203	0.25	0.635	0.838
M16878/4DAA*	32	1/0.203	H.S.C.A	Silver	0.203	0.25	0.635	0.838
M16878/4CAA*	32	1/0.203	C.C.steel	Silver	0.203	0.25	0.635	0.838
M16878/4BAB*	32	7/0.079	Copper	Silver	0.254	0.25	0.660	0.864
M16878/4DAB*	32	7/0.079	H.S.C.A	Silver	0.254	0.25	0.660	0.864
M16878/4BBA*	30	1/0.254	Copper	Silver	0.254	0.25	0.660	0.864
M16878/4DBA*	30	1/0.254	H.S.C.A	Silver	0.254	0.25	0.660	0.864
M16878/4CBA*	30	1/0.254	C.C.steel	Silver	0.254	0.25	0.660	0.864
M16878/4BBB*	30	7/0.102	Copper	Silver	0.305	0.25	0.711	0.914
M16878/4DBB*	30	7/0.102	H.S.C.A	Silver	0.305	0.25	0.711	0.914
M16878/4BCA*	28	1/0.320	Copper	Silver	0.320	0.25	0.737	0.940
M16878/4DCA*	28	1/0.320	H.S.C.A	Silver	0.320	0.25	0.737	0.940
M16878/4CCA*	28	1/0.320	C.C.steel	Silver	0.320	0.25	0.737	0.940
M16878/4CCB*	28	7/0.127	Copper	Silver	0.380	0.25	0.797	1.000
M16878/4BDA*	26	1/0.404	Copper	Silver	0.404	0.25	0.813	1.016
M16878/4DDA*	26	1/0.404	H.S.C.A	Silver	0.404	0.25	0.813	1.016
M16878/4CDA*	26	1/0.404	C.C.Steel	Silver	0.404	0.25	0.813	1.016
M16878/4BDB*	26	7/0.160	Copper	Silver	0.483	0.25	0.889	1.092
M16878/4DDB*	26	7/0.160	H.S.C.A	Silver	0.483	0.25	0.889	1.092
M16878/4BEA*	24	1/0.511	Copper	Silver	0.511	0.25	0.914	1.118
M16878/4DEA*	24	1/0.511	H.S.C.A	Silver	0.511	0.25	0.914	1.118
M16878/4CEA*	24	1/0.511	C.C.Steel	Silver	0.511	0.25	0.914	1.118
M16878/4BEB*	24	7/0.203	Copper	Silver	0.610	0.25	1.016	1.219
M16878/4DEB*	24	7/0.203	H.S.C.A	Silver	0.610	0.25	1.016	1.219
M16878/4BFA*	22	1/0.643	Copper	Silver	0.645	0.25	1.041	1.245
M16878/4DFA*	22	1/0.643	H.S.C.A	Silver	0.645	0.25	1.041	1.245
M16878/4CFA*	22	1/0.643	C.C.Steel	Silver	0.645	0.25	1.041	1.245
M16878/4BFB*	22	7/0.254	Copper	Silver	0.762	0.25	1.168	1.372
M16878/4BFE*	22	19/0.16	Copper	Silver	0.804	0.25	1.168	1.372
M16878/4DFB*	22	7/0.254	H.S.C.A	Silver	0.762	0.25	1.168	1.372
M16878/4BGA*	20	1/0.813	Copper	Silver	0.813	0.25	1.219	1.422
M16878/4DGA*	20	1/0.813	H.S.C.A	Silver	0.813	0.25	1.219	1.422
M16878/4BGB*	20	7/0.320	Copper	Silver	0.965	0.25	1.372	1.575
M16878/4DGB*	20	7/0.320	H.S.C.A	Silver	0.965	0.25	1.372	1.575
PIN	Wire size (AWG)	Stranding	Conductor		Conductor Diameter (mm)	Insulated Thickness Nominal (mm)	Finished Wire Diameter (mm)	
			Material	Coating			Min	Max
M16878/4BHA*	18	1/1.020	Copper	Silver	1.024	0.25	1.422	1.676
M16878/4BHB*	18	7/0.404	Copper	Silver	1.219	0.25	1.626	1.880
M16878/4BHE*	18	19/0.235	Copper	Silver	1.219	0.25	1.626	1.880
M16878/4BJA*	16	1/1.290	Copper	Silver	1.290	0.25	1.702	2.057
M16878/4BJE*	16	19/0.287	Copper	Silver	1.440	0.25	1.850	2.100



M16878/4BKE*	14	19/0.361	Copper	Silver	1.829	0.25	2.241	2.600
M16878/4BLG*	12	37/0.320	Copper	Silver	2.261	0.25	2.667	3.023

备注:

- 1、PIN (Part or Identifying Number) 型号
- 2、H.S.C.A(High-Strength Copper Alloy) 高强度铜合金材质。
- 3、C.C.(Copper-Clad) 铜包钢双层金属材质。
- 4、电线型号表示方法: 例如: M16878/4BFB*



技术要求:

- 1、火花机测试电压: 3.4kv
- 2、冲击试验电压: 6.5kv 或 3.0kHz、4.6kv 火花机测试
- 3、耐压试验电压: 2.0kv
- 4、绝缘电阻: $IR_{20^{\circ}C} = K \cdot \log_{10} D/d$ (MΩ/KF)
 $IR_{20^{\circ}C}$: 20°C 的最小绝缘电阻
 K=50000
 D: 电线最大完成外径
 d: 导体直径
- 5、冷弯曲试验: 试验温度 X 时间: $-65 \pm 1^{\circ}C \times 4h$
 试验用芯轴直径:

电线规格 (AWG)	最大芯轴直径 (mm)
32AWG~16AWG	25.4
14AWG、12AWG	50.8

- 6、热冲击试验: 试验温度: 290°C
- 7、抗张强度 (Min): 4000Ibs/Inch² 或 27.56MPa
- 8、断裂伸长率 (Min): 150%
- 9、热老化试验: 不作要求
- 10、同心度 (Min): 70%
- 11、阻燃等级: VW-1
- 12、热收缩试验: 要求
- 13、标记耐擦性试验: 要求
- 14、拉伸回缩性试验: 要求
- 15、毒性测试: 不作要求
- 16、表面电阻: 不作要求



Worldlink
